







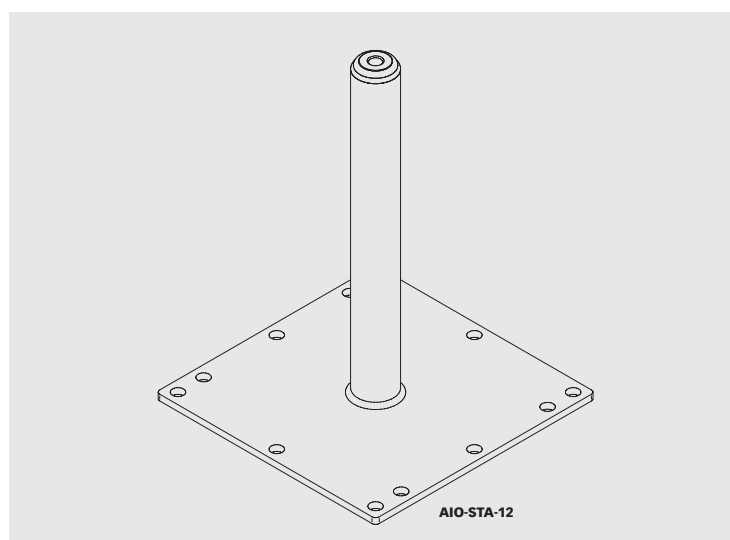
## Universal post **AIO-STA-12**

The AIO-STA-12 universal post from INNOTECH can be used as a single anchor point and a system post in the AIO lifeline system. A wide range of fastening sets ensure that it can be installed on almost all substructures.

-  AIO-STA-12 is ideal as an end/corner post in the INNOTECH lifeline and rail system.
-  with EAP-ABP-10-30 abseiling eyelet, also suitable for abseiling (up to 500 mm length)
-  high base stability and low application of force thanks to plastic deformation capability
-  fastening spacings of up to **15 m** are possible in the lifeline system
-  upon request, also available in A4 stainless steel
-  certification to the latest state of the art:

EN 795:2012 TYPE A and C

CEN/TS 16415:2013 DIBt national technical approval

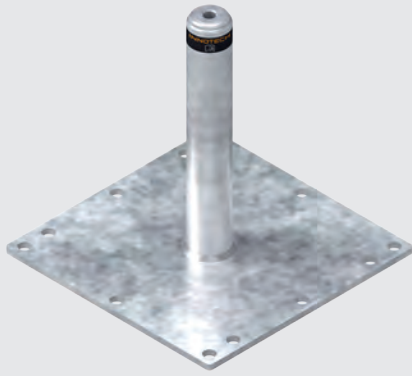


### **AIO-STA-12** **END/CORNER AND INTERMEDIATE POST** **BASE PLATE 300 x 300 mm in the AIO LIFELINE SYSTEM (EN 795 C)**

Substructure: concrete, hollow-core concrete slab, trapezoidal supporting sheet, steel construction, etc.  
 Post dimensions: 300 / 400 / 500 / 600 / 700 / 800 mm, Ø 48 mm  
 Base plate size: 300 x 300 x 8 mm  
 Material: galvanised steel

Thermal insulation cap and sealing sleeve under "Product accessories"  
 Include suitable fastening set in your order  
 Special lengths upon request

## AIO-STA-12

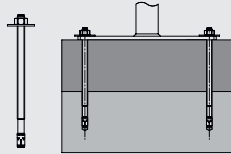


## BEF FASTENING SET

## CONCRETE

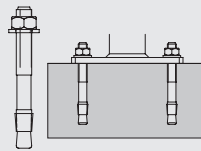
### BEF-102 ANCHOR BOLTS, CONCRETE (at least C20/25) – solid concrete with slope compensation

Material: galvanised steel  
 Contents: 4 x anchor bolts FISCHER FBN 12/120 + 140  
 Special fastening, product-specific testing is required!



### BEF-104 ANCHOR BOLTS, CONCRETE (at least C20/25) – cracked and uncracked

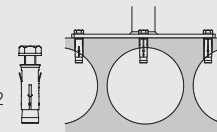
Material: stainless steel (AISI 316)  
 Contents: 4 x anchor bolts FISCHER FAZ II 12/10 A4



Bore depth min. 105 mm (Ø 12 mm)

### BEF-107 HOLLOW CORE ANCHOR HOLLOW CONCRETE SLAB (at least C50/60, B4)

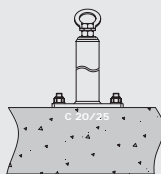
Material: galvanised steel  
 Contents: 8 x hollow core anchors FISCHER FHY-M10 x 52  
 8 x hex bolts M10 x 60 (DIN 933)  
 8 x washers (M10)



Cross section of hollow-core slab (concrete thickness) at least 30 mm

### ADHESIVE ANCHOR

4x M12 threaded rods  
 4x M10 washers  
 4x M12 locknuts or  
 4x nuts with spring-lock washer  
 Penetration depth: at least 100 mm  
 Injection mortar: Fischer FIS SB 390 S Hilti HY 200

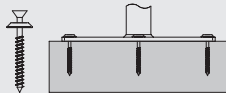


## BEF FASTENING SET

## WOOD

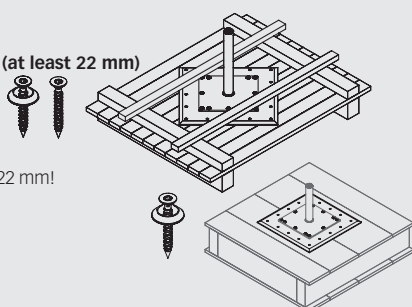
### 2 x BEF-209 FASTENING BOLTS – SOLID WOOD CEILING (at least 80 mm)

Material: galvanised steel  
 Contents: 4 x fastening bolts (8 x 80 mm)  
 4 x washers (conical)  
 Thickness of the solid wood ceiling at least 80 mm!  
 Can be used in combination with the AIO-STA-12 post 2 x BEF-209!  
 Product: EAP-QUAD-11 / AIO-STA-12



### BEF-210 FASTENING BOLTS WOOD – OSB plate thickness (at least 22 mm)

Material: galvanised steel  
 Contents: 48 x fastening bolts (6 x 50 mm)  
 12 x washers (conical)  
 Thickness of the OSB-board min. 22 mm!  
 Product: AIO-STA-12



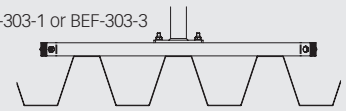
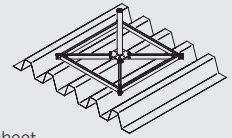
## BEF FASTENING SET

## TRAPEZOIDAL SHEET

### BEF-303 FASTENING FRAME FOR TRAPEZOIDAL SUPPORTING SHEET

Material: galvanised steel  
 Dimensions: 840 x 840 x 40 mm  
 Sheet steel thickness: at least 0.6 mm

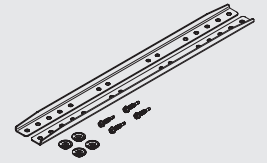
enables optimum load distribution over the trapezoidal sheet, very varied options for use  
 different options for combination with BEF-303-1 or BEF-303-3



### BEF-307-1 STABILISATION ELEMENT FOR TRAPEZOIDAL SUPPORTING SHEET

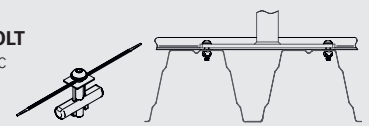
Material: galvanised steel  
 Contents: 2 x support strips  
 4 x bore fasteners  
 4 x centring discs

Sheet steel thickness: at least 0.63 mm  
 Only in combination with BEF-307-2 or BEF-404, for the stabilisation of corner and end points!



### BEF-307-2 OSB PLATE, SPECIAL ANCHOR BOLT

Material: stainless steel (AISI 304), plastic  
 Contents: 4 x special anchor bolts  
 OSB plate thickness: 18 mm – 30 mm



### BEF-404 SCREW FASTENER FOR TRAPEZOIDAL SUPPORTING SHEET

Material: galvanised steel  
 Contents: 4 x counter strips including screw material, sealing washers  
 Sheet steel thickness: at least 0.7 mm  
 Product: AIO-STA-12  
 Can be used only to a limited extent in the AIO lifeline system (BEF-307-1)

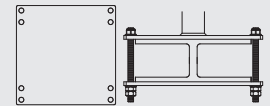


## BEF FASTENING SET

## COUNTERS

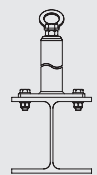
### BEF-401-12 COUNTER PLATE STEEL CONSTRUCTION (150 x 150 x 8 mm)

Material: galvanised steel  
 Max. width of steel construction: 105 mm



### STEEL BOLTS

4x steel bolts M12, steel quality  $\geq 5.6$   
 4x M12 locknuts or  
 4x nuts with spring-lock washer



use suitable washers on the 4 corner bores

### WELDING

Weld seam at least A5 and 80 mm length for each base plate  
 Before welding, remove powder coating and zinc coating correctly

